

Navigation to Bayland Marina in Baytown, Texas



Navigation Notes...

This route information has been created to take you from CLC marker #2 to Bayland Marina in Baytown, Texas. GPS waypoints are provided on the following charts, but the usual TMCA caveat of course applies: "...to be used with your own judgment as a captain, and at your own risk."

The route takes you up past Red Bluff Point, staying well away from the shallowest water near the point itself, and to a somewhat arbitrary waypoint adjacent to the Bayport Channel. Cross this channel with care, watching out for ship and tow traffic, and then continue northward on a course more-or-less parallel to the ship channel. There is no need to actually enter the channel until you get to HSC #89, and if you are a sailboat, it is probably good practice to drop sails before you get to 89 and motor the remainder of the way. Also, since you are now approaching a blind corner in the ship channel, with ships and/or tows perhaps coming toward you, it is a good idea to switch to VHF channel 12 and listen to conversations between VTS (Vessel Traffic Service) and nearby ships and tows, and thereby try to ascertain just what traffic might be coming at you! It is much better to know this ahead of time rather than to be surprised! The short stretch between Morgan's Point and Bayland can sometimes be as challenging as is traversing Bolivar Roads, so do be careful and pay close attention to what is going on around you! (continues on next slide)

The *recommended* route from Morgan’s Point northward does however show waypoints continuing up the *green* side of the channel, rather than the red side. This may seem counter-intuitive, in that it puts you facing oncoming traffic directly. But if you look carefully at water depths, there is somewhat more “deep” water just outside the channel on the green side than there is on the red side, and if you were forced to really get out of the way of a passing ship, the green side seems to be a somewhat better escape path for that. Being on the red side of the channel, with an inbound ship coming up behind you, is *not* a good place to be if that ship crowds you out of the channel! Do also be aware of possible ship movements when crossing the entrance to Barbours Cut (between lights 91 and 93), and, since Barbours Cut is a USCG Security Zone, do *not* enter there for any reason!

With caution, cross over to the red side of the channel as you approach HSC #100. You will be leaving this marker to starboard as you look for the beginning of the Bayland channel. There are also two range markers in the immediate area, and you will be passing *between* them as you line up on Bayland #1 and 2. Do *not* cut this corner however! Continue through the Bayland channel until you get to #18, just past the end of the breakwater. And if you should be heading for the fuel dock on the SE quadrant of the marina, do stay closer to the docks and away from the breakwater as there sometimes can be shallow water along that shoreline.

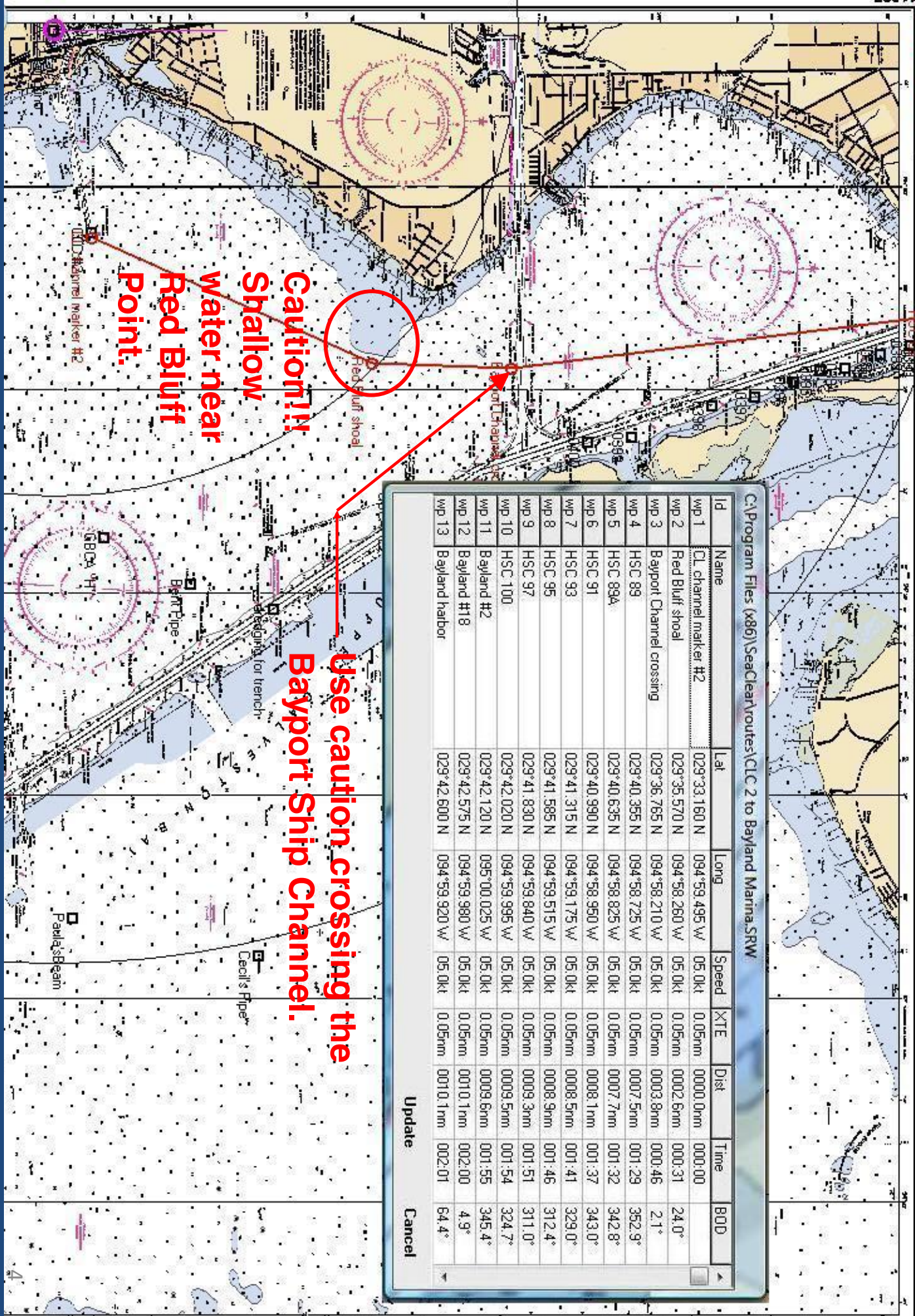
C:\Program Files (x86)\SeaClear\Routes\CLC 2 to Bayland Marina.SRW

Id	Name	Lat	Long	Speed	XTE	Dist	Time	BOD
wp 1	CL channel marker #2	029°33.160 N	094°59.495 W	05.0kt	0.05nm	0000.0nm	000:00	
wp 2	Red Bluff shoal	029°35.570 N	094°58.260 W	05.0kt	0.05nm	0002.6nm	000:31	24.0°
wp 3	Bayport Channel crossing	029°36.765 N	094°58.210 W	05.0kt	0.05nm	0003.8nm	000:46	2.1°
wp 4	HSC 89	029°40.355 N	094°58.725 W	05.0kt	0.05nm	0007.5nm	001:29	352.9°
wp 5	HSC 89A	029°40.635 N	094°58.825 W	05.0kt	0.05nm	0007.7nm	001:32	342.8°
wp 6	HSC 91	029°40.990 N	094°58.960 W	05.0kt	0.05nm	0008.1nm	001:37	343.0°
wp 7	HSC 93	029°41.315 N	094°59.175 W	05.0kt	0.05nm	0008.5nm	001:41	329.0°
wp 8	HSC 95	029°41.565 N	094°59.515 W	05.0kt	0.05nm	0008.9nm	001:46	312.4°
wp 9	HSC 97	029°41.830 N	094°59.840 W	05.0kt	0.05nm	0009.3nm	001:51	311.0°
wp 10	HSC 100	029°42.020 N	094°59.995 W	05.0kt	0.05nm	0009.5nm	001:54	324.7°
wp 11	Bayland #2	029°42.120 N	095°00.025 W	05.0kt	0.05nm	0009.6nm	001:55	345.4°
wp 12	Bayland #18	029°42.575 N	094°59.980 W	05.0kt	0.05nm	0010.1nm	002:00	4.9°
wp 13	Bayland harbor	029°42.600 N	094°59.920 W	05.0kt	0.05nm	0010.1nm	002:01	64.4°

Update Cancel

Caution!!!
Shallow
Water near
Red Bluff
Point.

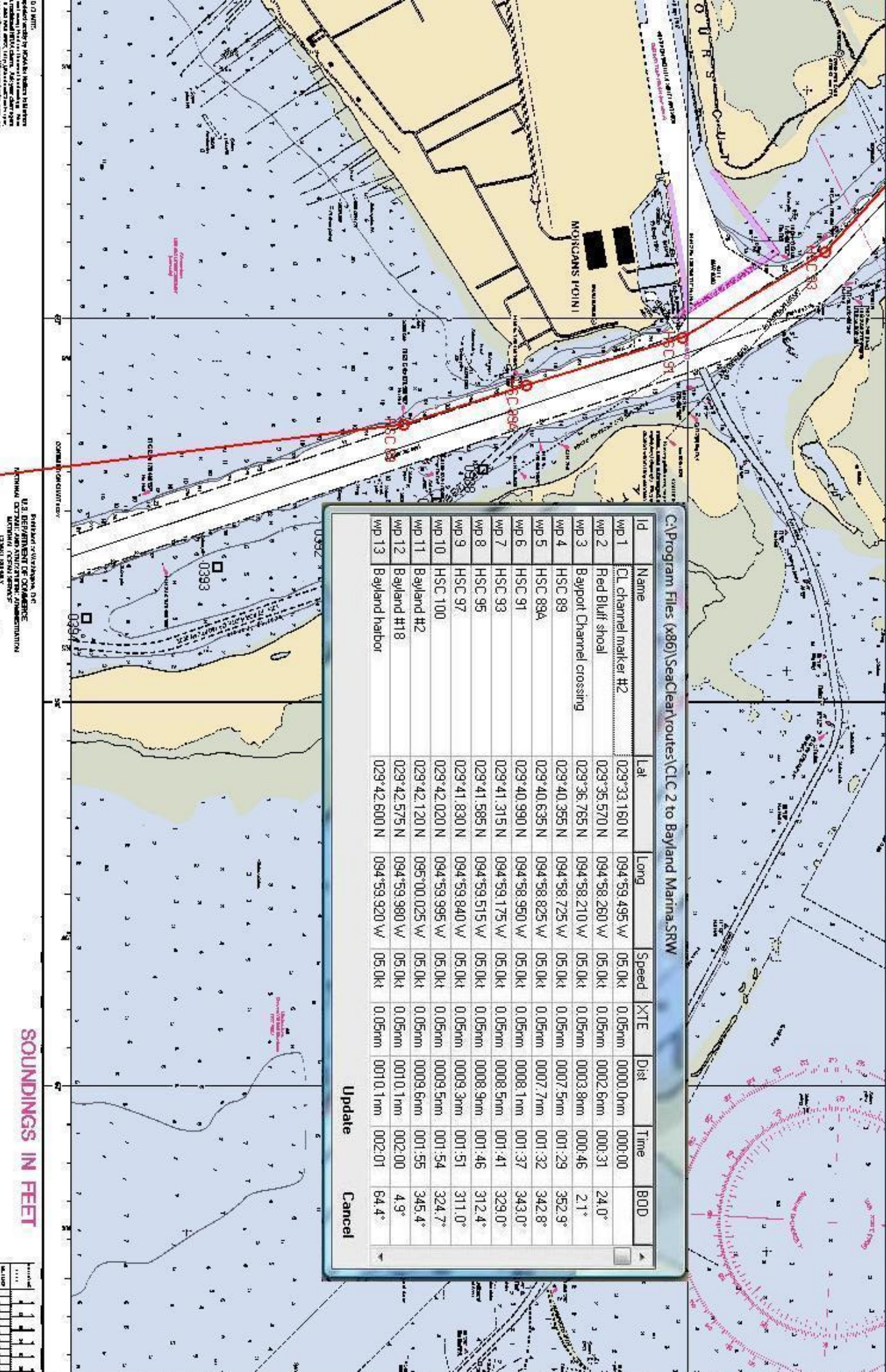
Use caution crossing the
Bayport Ship Channel.



C:\Program Files (x86)\SeaClear\Routes\CIC 2 to Bayland Marina.SRW

ID	Name	Lat	Long	Speed	XTE	Dist	Time	BOD
wp 1	CL channel marker #2	029°33.160 N	094°59.495 W	05.0kt	0.05nm	0000.0nm	000:00	
wp 2	Red Bluff shoal	029°36.570 N	094°58.260 W	05.0kt	0.05nm	0002.6nm	000:31	24.0°
wp 3	Bayport Channel crossing	029°36.765 N	094°58.210 W	05.0kt	0.05nm	0003.8nm	000:46	2.1°
wp 4	HSC 89	029°40.355 N	094°58.725 W	05.0kt	0.05nm	0007.5nm	001:29	352.9°
wp 5	HSC 89A	029°40.635 N	094°58.825 W	05.0kt	0.05nm	0007.7nm	001:32	342.8°
wp 6	HSC 91	029°40.990 N	094°58.950 W	05.0kt	0.05nm	0008.1nm	001:37	343.0°
wp 7	HSC 93	029°41.315 N	094°59.175 W	05.0kt	0.05nm	0008.5nm	001:41	329.0°
wp 8	HSC 95	029°41.585 N	094°59.515 W	05.0kt	0.05nm	0008.9nm	001:46	312.4°
wp 9	HSC 97	029°41.830 N	094°59.840 W	05.0kt	0.05nm	0009.3nm	001:51	311.0°
wp 10	HSC 100	029°42.020 N	094°59.995 W	05.0kt	0.05nm	0009.5nm	001:54	324.7°
wp 11	Bayland #2	029°42.120 N	095°00.025 W	05.0kt	0.05nm	0009.6nm	001:55	345.4°
wp 12	Bayland #18	029°42.575 N	094°59.980 W	05.0kt	0.05nm	0010.1nm	002:00	4.9°
wp 13	Bayland harbor	029°42.600 N	094°59.920 W	05.0kt	0.05nm	0010.1nm	002:01	64.4°

Update Cancel



0.0 MILES
 0.1 MILES
 0.2 MILES
 0.3 MILES
 0.4 MILES
 0.5 MILES
 0.6 MILES
 0.7 MILES
 0.8 MILES
 0.9 MILES
 1.0 MILES

0.0 MILES
 0.1 MILES
 0.2 MILES
 0.3 MILES
 0.4 MILES
 0.5 MILES
 0.6 MILES
 0.7 MILES
 0.8 MILES
 0.9 MILES
 1.0 MILES

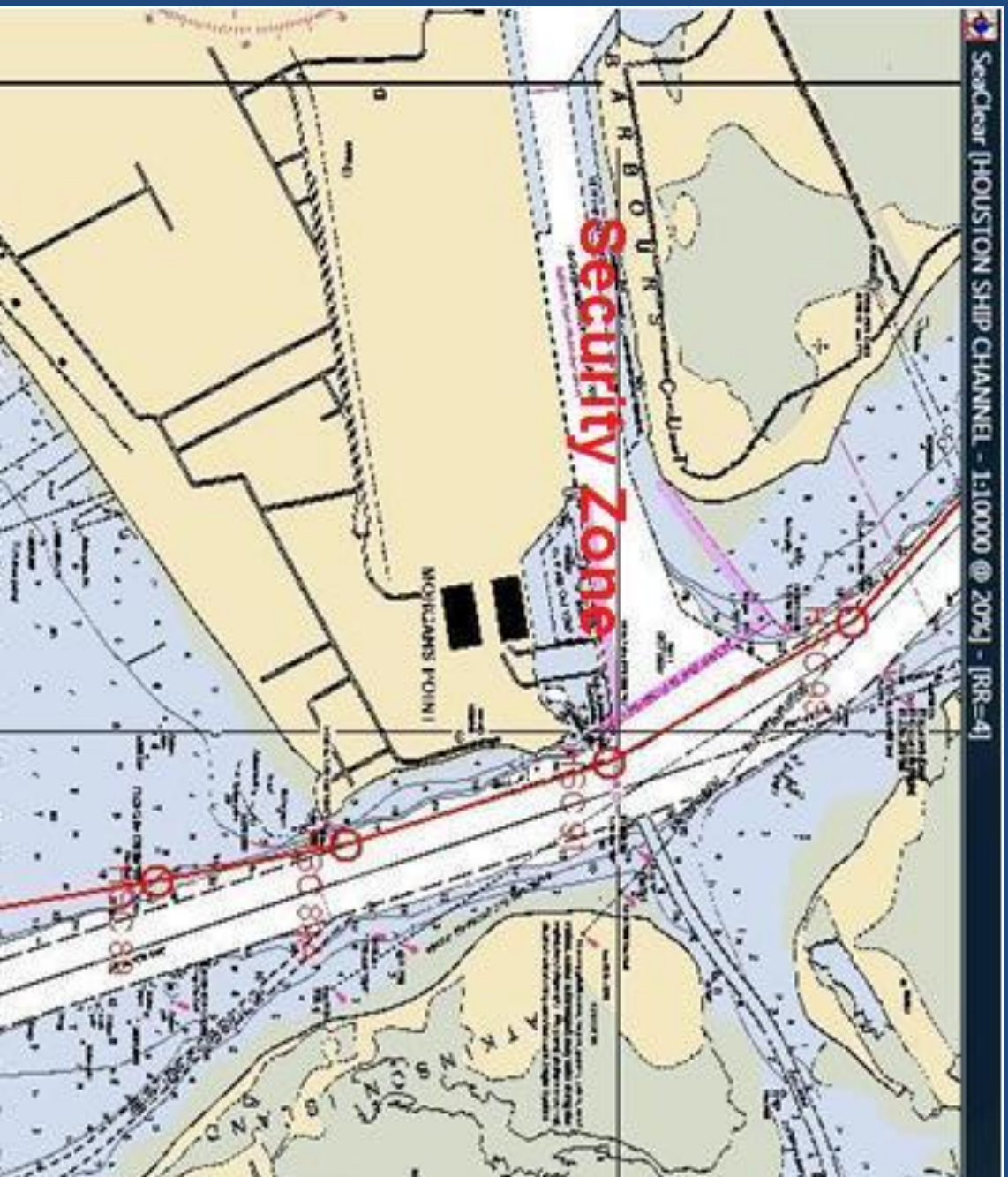
0.0 MILES
 0.1 MILES
 0.2 MILES
 0.3 MILES
 0.4 MILES
 0.5 MILES
 0.6 MILES
 0.7 MILES
 0.8 MILES
 0.9 MILES
 1.0 MILES

0.0 MILES
 0.1 MILES
 0.2 MILES
 0.3 MILES
 0.4 MILES
 0.5 MILES
 0.6 MILES
 0.7 MILES
 0.8 MILES
 0.9 MILES
 1.0 MILES

0.0 MILES
 0.1 MILES
 0.2 MILES
 0.3 MILES
 0.4 MILES
 0.5 MILES
 0.6 MILES
 0.7 MILES
 0.8 MILES
 0.9 MILES
 1.0 MILES

SOUNDINGS IN FEET

Do not enter the USCG Barbours Cut Security Zone!!!

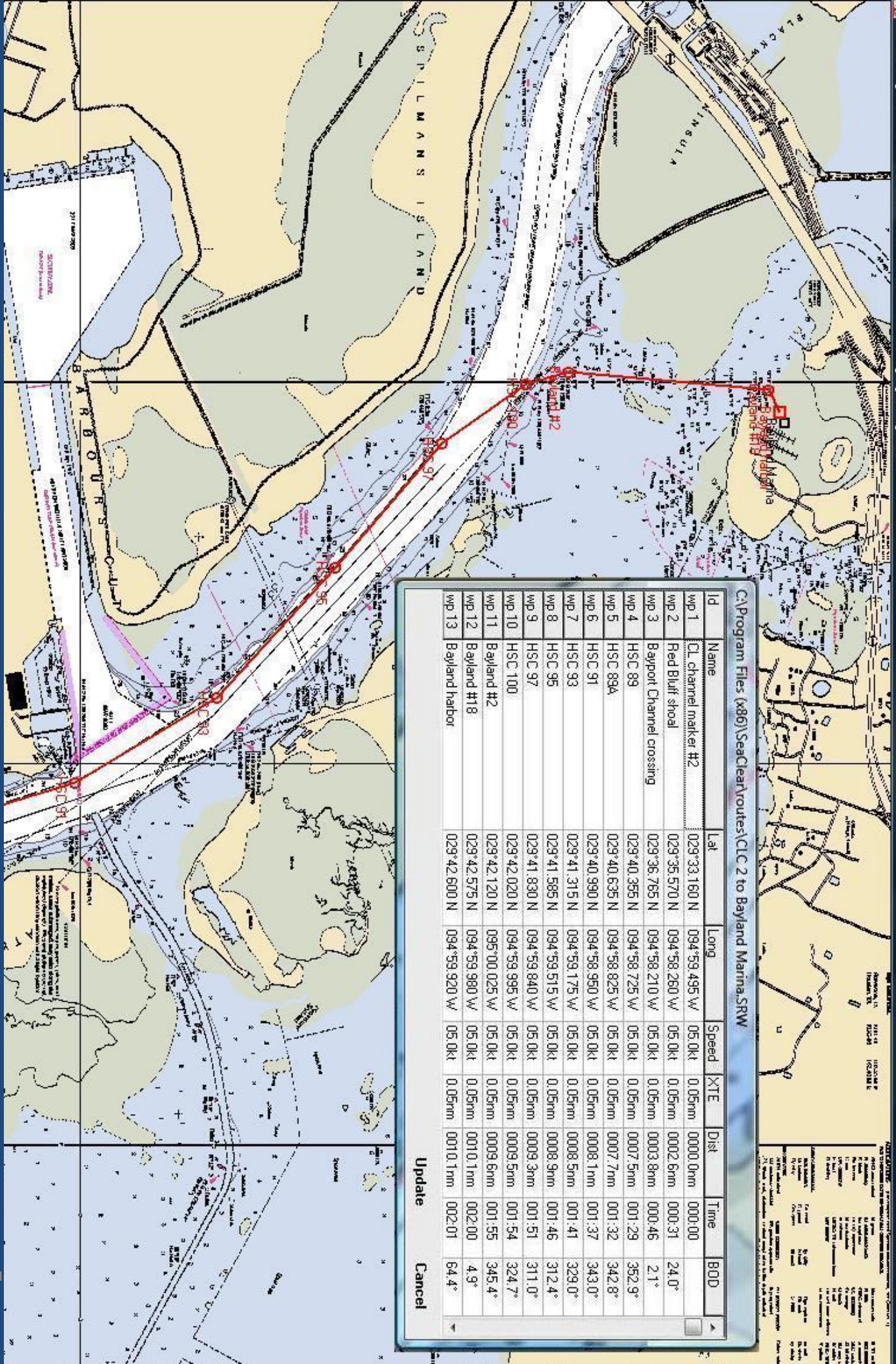


Enter the HSC barge lane just south of marker 89.

Listen to VHF channel 12 to monitor VTS (Vessel Traffic Control) conversations with nearby ships and tows.

If you have AIS, use it to monitor nearby ship and tow traffic.

Keep outside of the Security Zone at Barbours Cut!!!

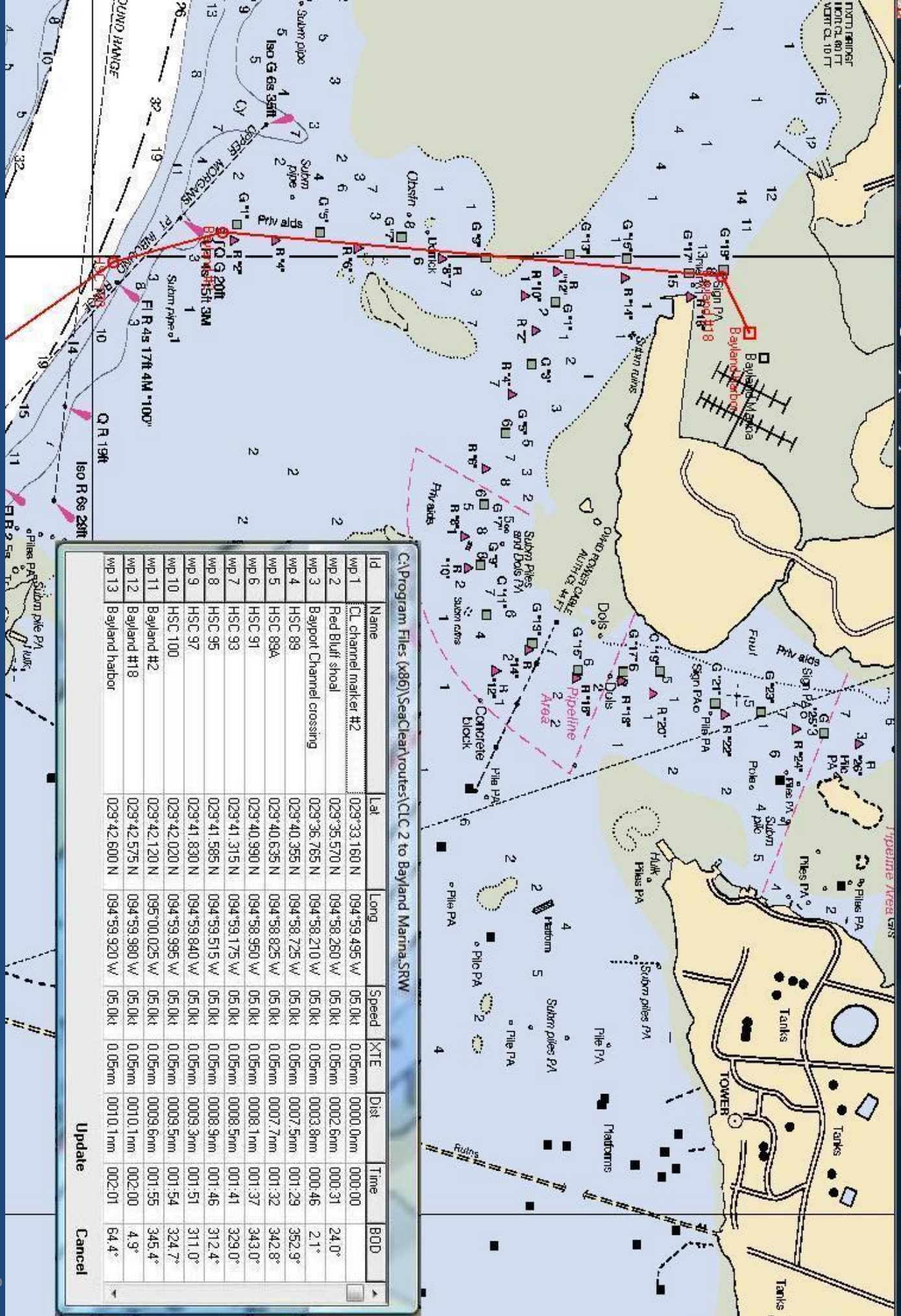


C:\Program Files (x86)\SeaClear\Routes\CLC 2 to Bayland Marina.SRW

Id	Name	Lat	Long	Speed	XTE	Dist	Time	BOD
wp 1	CL channel marker #2	029°33.160 N	094°59.495 W	05.0kt	0.05nm	0000.0nm	000:00	
wp 2	Red Bluff shoal	029°35.570 N	094°58.260 W	05.0kt	0.05nm	0002.6nm	000:31	24.0°
wp 3	Bayport Channel crossing	029°36.765 N	094°58.210 W	05.0kt	0.05nm	0003.8nm	000:46	2.1°
wp 4	HSC 89	029°40.365 N	094°58.725 W	05.0kt	0.05nm	0007.5nm	001:29	352.9°
wp 5	HSC 89a	029°40.635 N	094°58.825 W	05.0kt	0.05nm	0007.7nm	001:32	342.8°
wp 6	HSC 91	029°40.990 N	094°58.950 W	05.0kt	0.05nm	0008.1nm	001:37	343.0°
wp 7	HSC 93	029°41.315 N	094°59.175 W	05.0kt	0.05nm	0008.5nm	001:41	329.0°
wp 8	HSC 95	029°41.585 N	094°59.515 W	05.0kt	0.05nm	0008.9nm	001:46	312.4°
wp 9	HSC 97	029°41.830 N	094°59.840 W	05.0kt	0.05nm	0009.3nm	001:51	311.0°
wp 10	HSC 100	029°42.020 N	094°59.995 W	05.0kt	0.05nm	0009.5nm	001:54	324.7°
wp 11	Bayland #2	029°42.120 N	095°00.025 W	05.0kt	0.05nm	0009.6nm	001:55	345.4°
wp 12	Bayland #18	029°42.575 N	094°59.980 W	05.0kt	0.05nm	0010.1nm	002:00	4.9°
wp 13	Bayland harbor	029°42.600 N	094°59.920 W	05.0kt	0.05nm	0010.1nm	002:01	64.4°

Update Cancel

Show Depth Contours
 Show Soundings
 Show Navigational Aids
 Show Obstructions
 Show Tides
 Show Currents
 Show Wind
 Show Weather
 Show Radar
 Show AIS
 Show VTS
 Show Portals
 Show Charts
 Show Grid
 Show Scale
 Show Units
 Show Datum
 Show Projection
 Show Contour Interval
 Show Contour Style
 Show Contour Color
 Show Contour Width
 Show Contour Label
 Show Contour Offset
 Show Contour Font
 Show Contour Size
 Show Contour Weight
 Show Contour Color
 Show Contour Width
 Show Contour Label
 Show Contour Offset
 Show Contour Font
 Show Contour Size
 Show Contour Weight



C:\Program Files (x86)\SeaClear\routes\CLC 2 to Bayland Marina.SRW

Id	Name	Lat	Long	Speed	XTE	Dist	Time	BOD
wp 1	CL channel marker #2	029°33.160 N	094°59.495 W	05.0Kt	0.05nm	0000.0nm	000:00	
wp 2	Red Bluff shoal	029°35.570 N	094°58.260 W	05.0Kt	0.05nm	0002.6nm	000:31	24.0°
wp 3	Bayport Channel crossing	029°36.765 N	094°58.210 W	05.0Kt	0.05nm	0003.8nm	000:46	2.1°
wp 4	HSC 89	029°40.385 N	094°58.725 W	05.0Kt	0.05nm	0007.5nm	001:29	352.9°
wp 5	HSC 89A	029°40.635 N	094°58.825 W	05.0Kt	0.05nm	0007.7nm	001:32	342.8°
wp 6	HSC 91	029°40.990 N	094°58.950 W	05.0Kt	0.05nm	0008.1nm	001:37	343.0°
wp 7	HSC 93	029°41.315 N	094°59.175 W	05.0Kt	0.05nm	0008.5nm	001:41	329.0°
wp 8	HSC 95	029°41.585 N	094°59.515 W	05.0Kt	0.05nm	0008.9nm	001:46	312.4°
wp 9	HSC 97	029°41.830 N	094°59.840 W	05.0Kt	0.05nm	0009.3nm	001:51	311.0°
wp 10	HSC 100	029°42.020 N	094°59.995 W	05.0Kt	0.05nm	0009.5nm	001:54	324.7°
wp 11	Bayland #2	029°42.120 N	095°00.025 W	05.0Kt	0.05nm	0009.6nm	001:55	345.4°
wp 12	Bayland #18	029°42.575 N	094°59.980 W	05.0Kt	0.05nm	0010.1nm	002:00	4.9°
wp 13	Bayland harbor	029°42.600 N	094°59.920 W	05.0Kt	0.05nm	0010.1nm	002:01	64.4°

Update Cancel

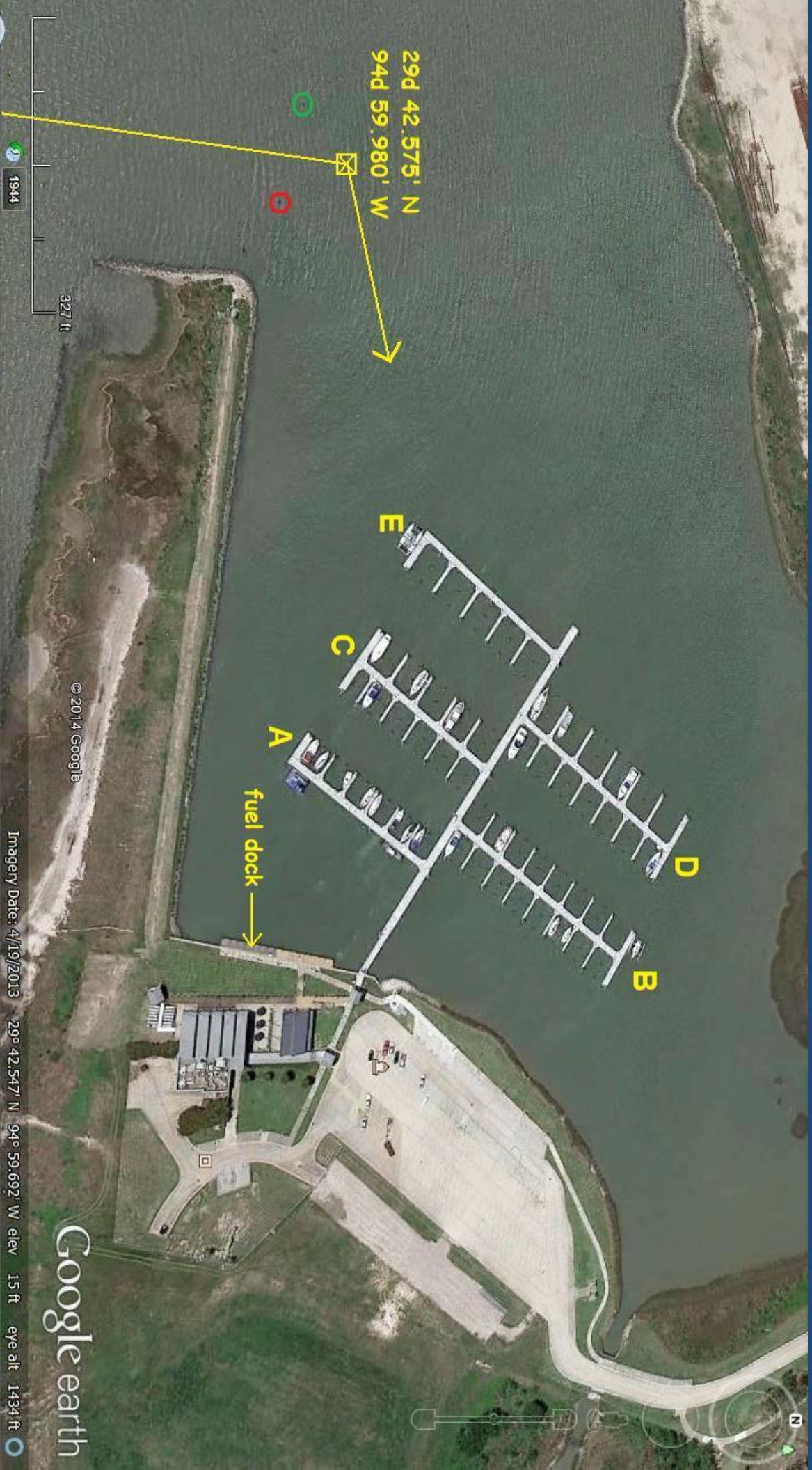
This is an enlarged image of the waypoint list shown in previous slides.

C:\Program Files (x86)\SeaClear\routes\CLC 2 to Bayland Marina.SRW

Id	Name	Lat	Long	Speed	XTE	Dist	Time	BOD
wp 1	CL channel marker #2	029°33.160 N	094°59.495 W	05.0kt	0.05nm	0000.0nm	000:00	
wp 2	Red Bluff shoal	029°35.570 N	094°58.260 W	05.0kt	0.05nm	0002.6nm	000:31	24.0°
wp 3	Bayport Channel crossing	029°36.765 N	094°58.210 W	05.0kt	0.05nm	0003.8nm	000:46	2.1°
wp 4	HSC 89	029°40.355 N	094°58.725 W	05.0kt	0.05nm	0007.5nm	001:29	352.9°
wp 5	HSC 89A	029°40.635 N	094°58.825 W	05.0kt	0.05nm	0007.7nm	001:32	342.8°
wp 6	HSC 91	029°40.990 N	094°58.950 W	05.0kt	0.05nm	0008.1nm	001:37	343.0°
wp 7	HSC 93	029°41.315 N	094°59.175 W	05.0kt	0.05nm	0008.5nm	001:41	329.0°
wp 8	HSC 95	029°41.585 N	094°59.515 W	05.0kt	0.05nm	0008.9nm	001:46	312.4°
wp 9	HSC 97	029°41.830 N	094°59.840 W	05.0kt	0.05nm	0009.3nm	001:51	311.0°
wp 10	HSC 100	029°42.020 N	094°59.995 W	05.0kt	0.05nm	0009.5nm	001:54	324.7°
wp 11	Bayland #2	029°42.120 N	095°00.025 W	05.0kt	0.05nm	0009.6nm	001:55	345.4°
wp 12	Bayland #18	029°42.575 N	094°59.980 W	05.0kt	0.05nm	0010.1nm	002:00	4.9°
wp 13	Bayland harbor	029°42.600 N	094°59.920 W	05.0kt	0.05nm	0010.1nm	002:01	64.4°

Update Cancel

The GPS waypoints provided should be used with your own judgment as a captain, and at your own risk!



29d 42.575' N
94d 59.980' W

fuel dock →

Google earth

Imagery Date: 4/19/2013

29° 42.547' N 94° 59.692' W elev 15 ft eye alt 1434 ft

© 2014 Google

327 ft

1944

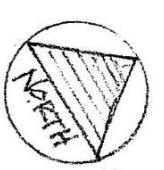
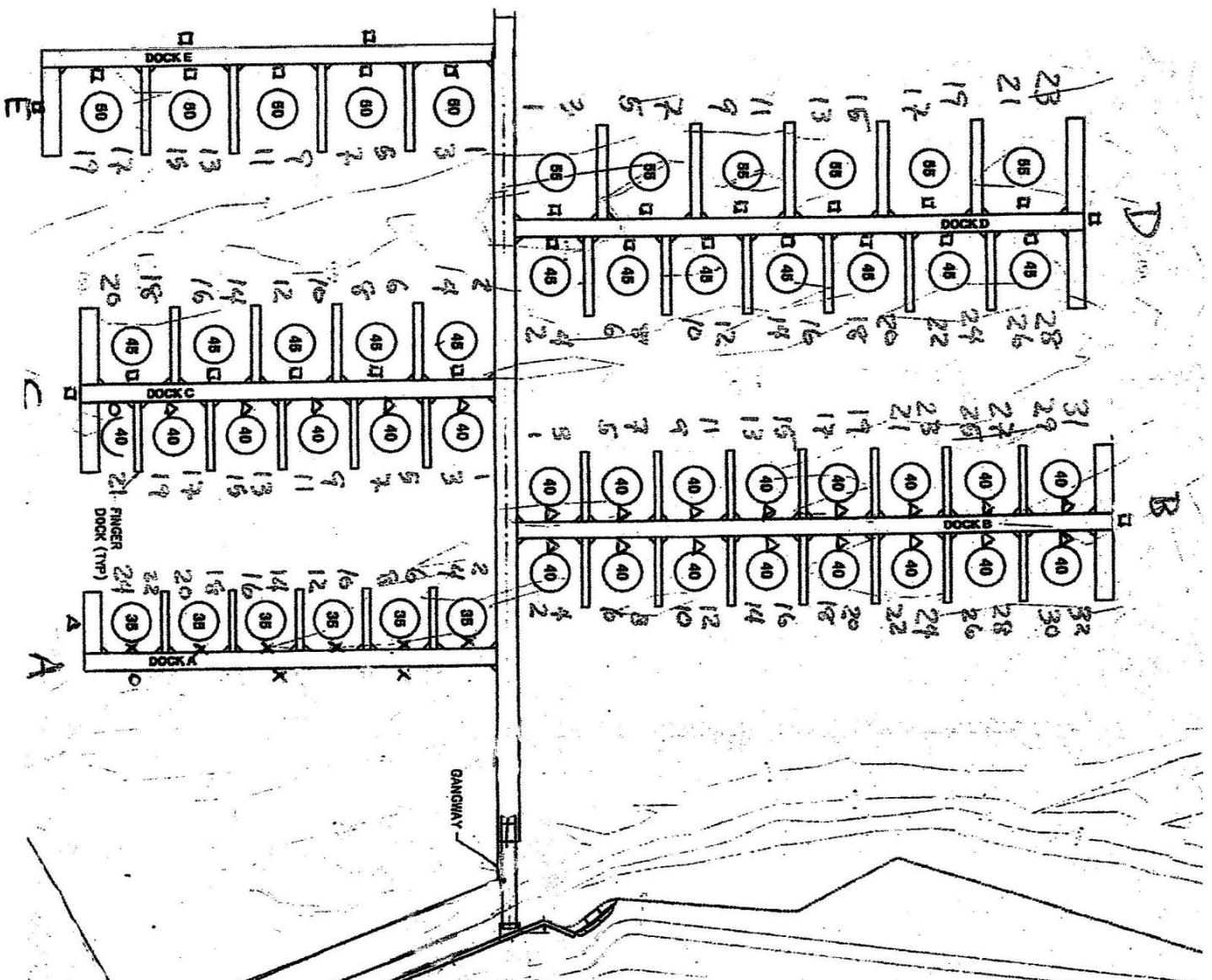


433 ft

© 2013 Google

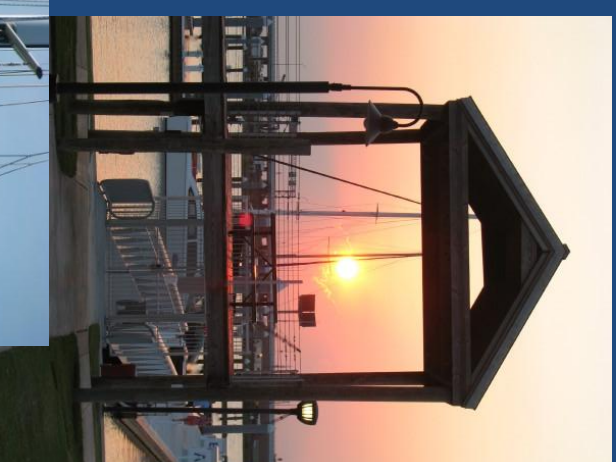
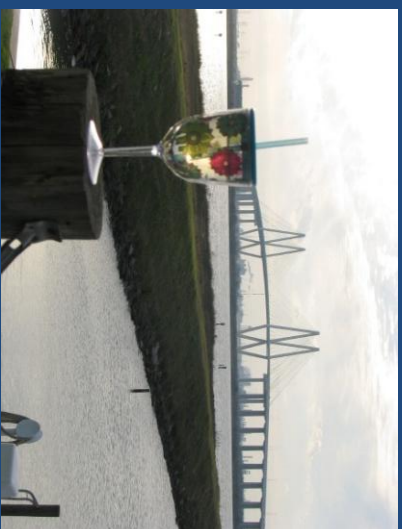
Imagery Date: 11/28/2011 29° 42.587' N 94° 59.844' W elev -1 ft eye alt 1908 ft

Google earth



ELECTRICAL LEGEND

- X = 4 OUTLETS @ 30 AMPS
- O = 1 OUTLET @ 50 AMPS
- Δ = 2 OUTLETS @ 50 AMPS
- = 4 OUTLETS @ 50 AMPS



Bayland scenes...



More
Bayland
scenes...



A Bayland sunset....

